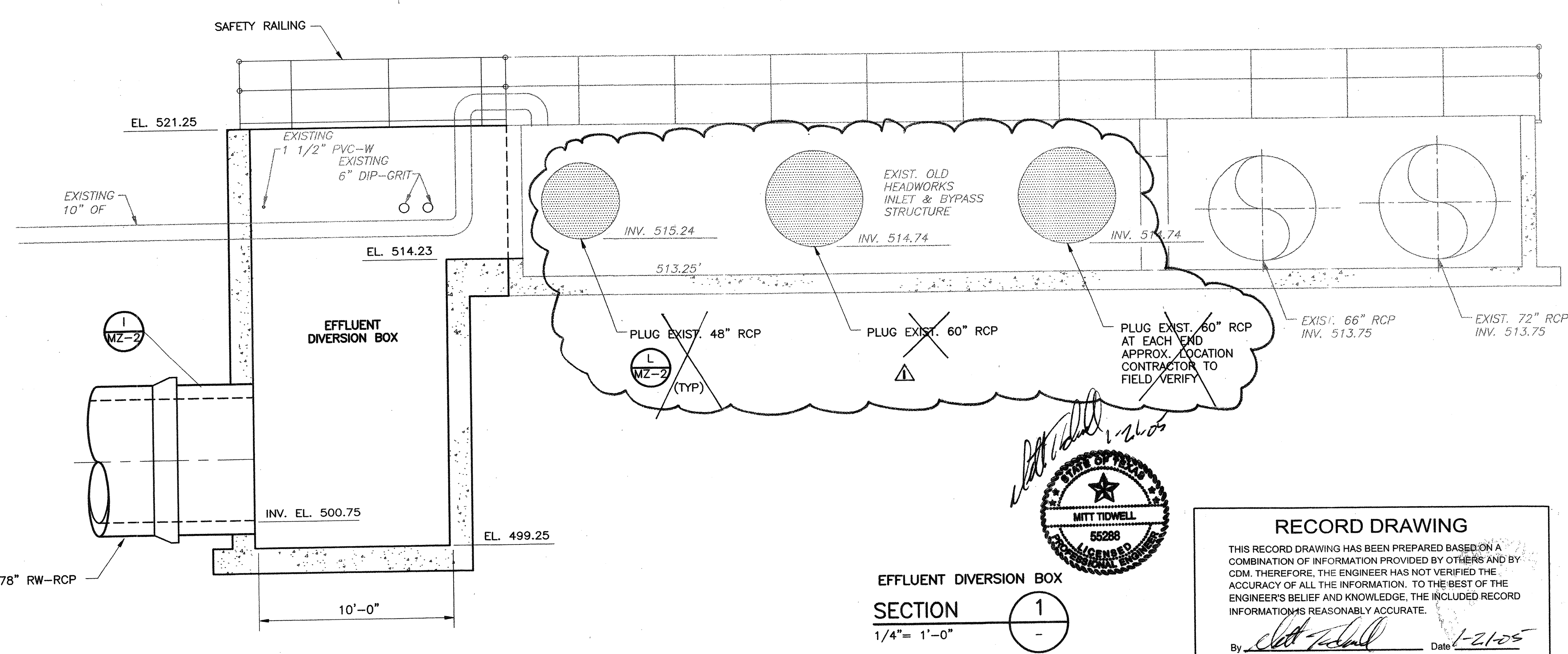
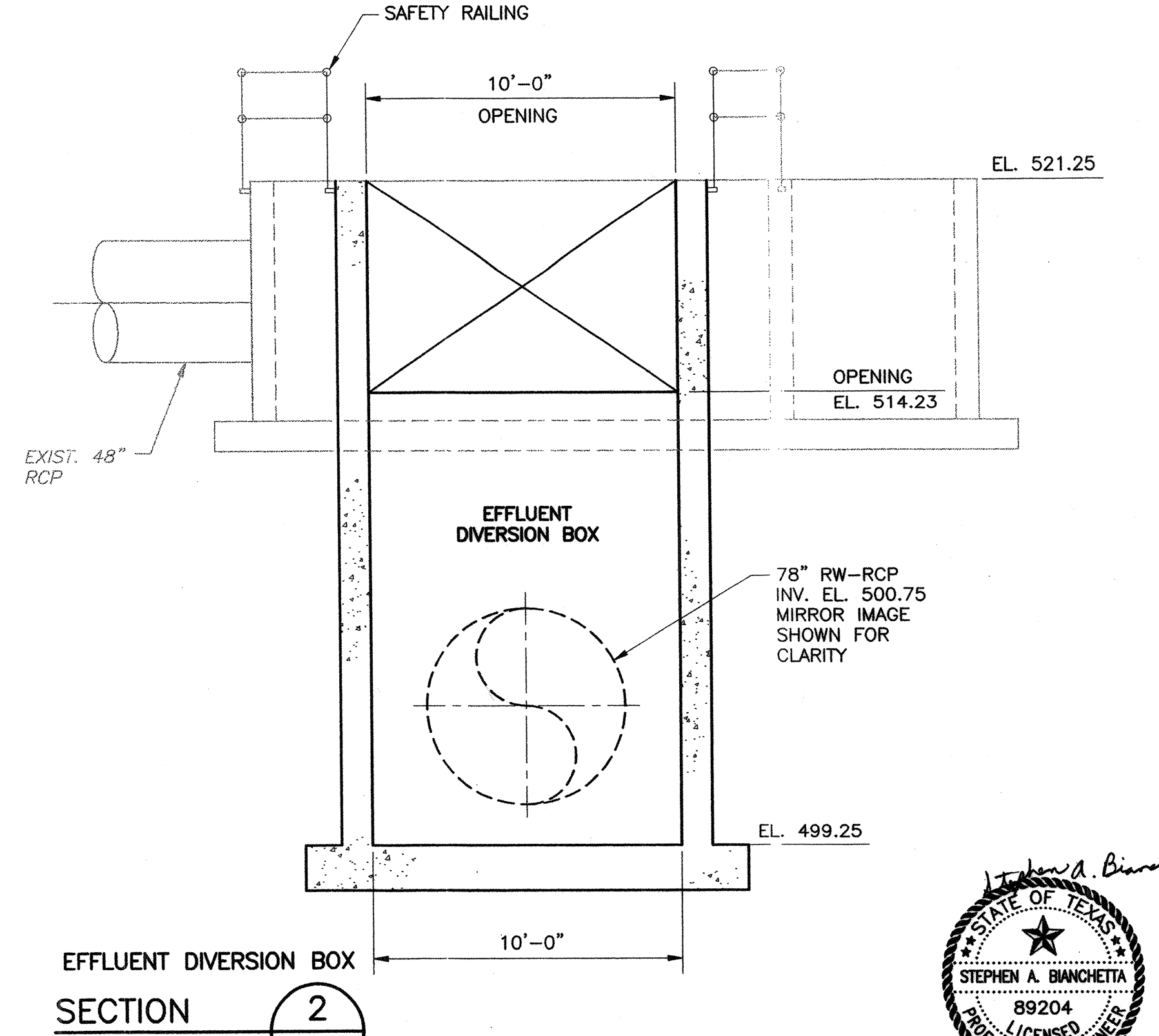


NOTE:  
CONTRACTOR SHALL RELOCATE  
EXISTING UTILITY AND GRIT LINES  
IN CONFLICT WITH EFFLUENT  
DIVERSION BOX AND 78\"/>

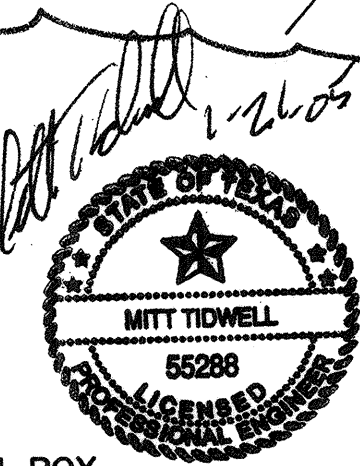
EFFLUENT DIVERSION BOX  
PLAN  
1/4" = 1'-0"



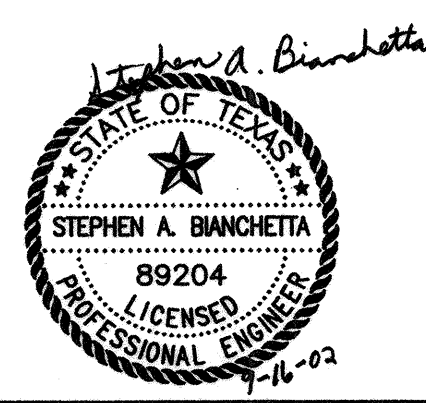
EFFLUENT DIVERSION BOX  
SECTION 1  
1/4" = 1'-0"



EFFLUENT DIVERSION BOX  
SECTION 2  
1/4" = 1'-0"



**RECORD DRAWING**  
THIS RECORD DRAWING HAS BEEN PREPARED BASED ON A COMBINATION OF INFORMATION PROVIDED BY OTHERS AND BY CDM. THEREFORE, THE ENGINEER HAS NOT VERIFIED THE ACCURACY OF ALL THE INFORMATION. TO THE BEST OF THE ENGINEER'S BELIEF AND KNOWLEDGE, THE INCLUDED RECORD INFORMATION IS REASONABLY ACCURATE.  
By: *[Signature]* Date: 1-21-05  
**CDM**



REV. NO.	DATE	DRWN	CHKD	REMARKS
1	1/05	JC	MT	REVISED FOR RECORD

DESIGNED BY: SAB  
DRAWN BY: JC  
SHEET CHK'D BY: JWS  
CROSS CHK'D BY:  
APPROVED BY: R. ORTIZ  
DATE: AUGUST 2002

CAMP DRESSER & MCKEE INC.  
**CDM**  
environmental engineers, scientists, planners, & management consultants

SAN ANTONIO WATER SYSTEM  
LEON CREEK, SALADO CREEK, AND DOS RIOS  
WATER RECYCLING CENTER INTERCONNECTIONS  
MODIFICATIONS PROJECT

SALADO CREEK WATER RECYCLING CENTER  
EFFLUENT DIVERSION BOX  
PLAN AND SECTIONS

PROJECT No 8246-36101  
FILE NAME:  
SHEET No  
MS-3